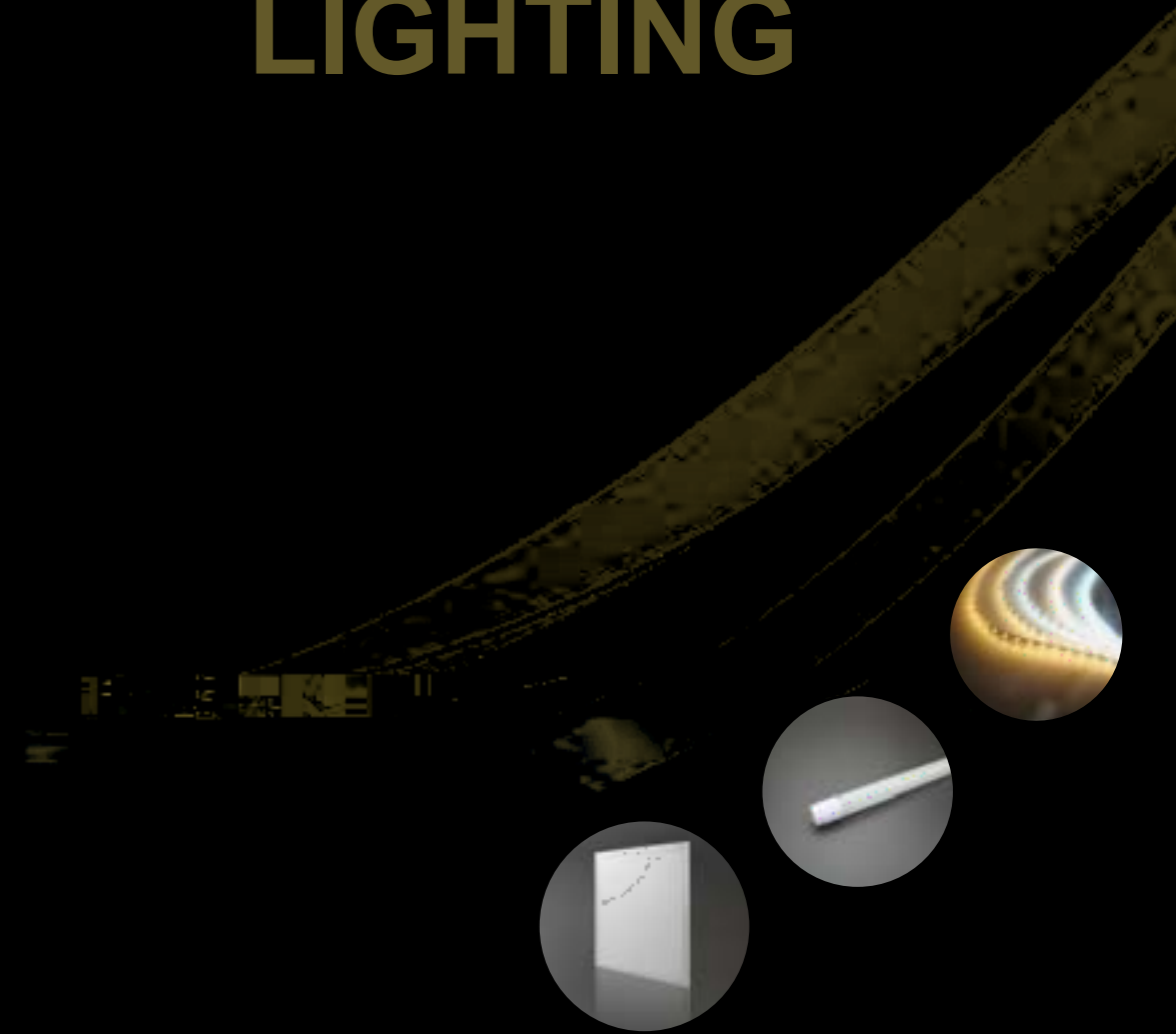


NATIONSTAR

LIGHTING



BRIEF INTRODUCTION

Foshan NationStar Optoelectronics Co.,Ltd has been specializing in LED industry for over 40 years, and started LED lighting manufacturing since 2004. With a strong R&D ability, reliable product quality and excellent after-sales service, NationStar becomes a leading manufacturer for chips, LEDs and LED lighting products.



Headquarters, Northern Area

LED Module Division

Land Area: 280,000 sq ft

Floor Area: 500,000 sq ft

Headquarters, Southern Area

LED Lighting Division
White LED Division
RGB LED Division

Land Area: 380,000 sq ft

Floor Area: 1,000,000 sq ft



NationStar Semiconductor

LED wafer & LED chip production facilities

Land Area: 350,000 sq ft

Floor Area: 600,000 sq ft

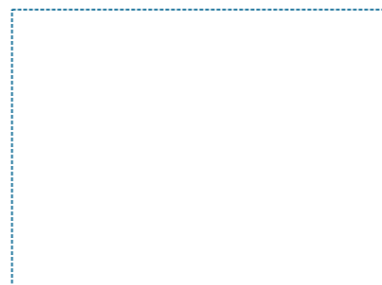
INDUSTRIAL CHAIN



Chip

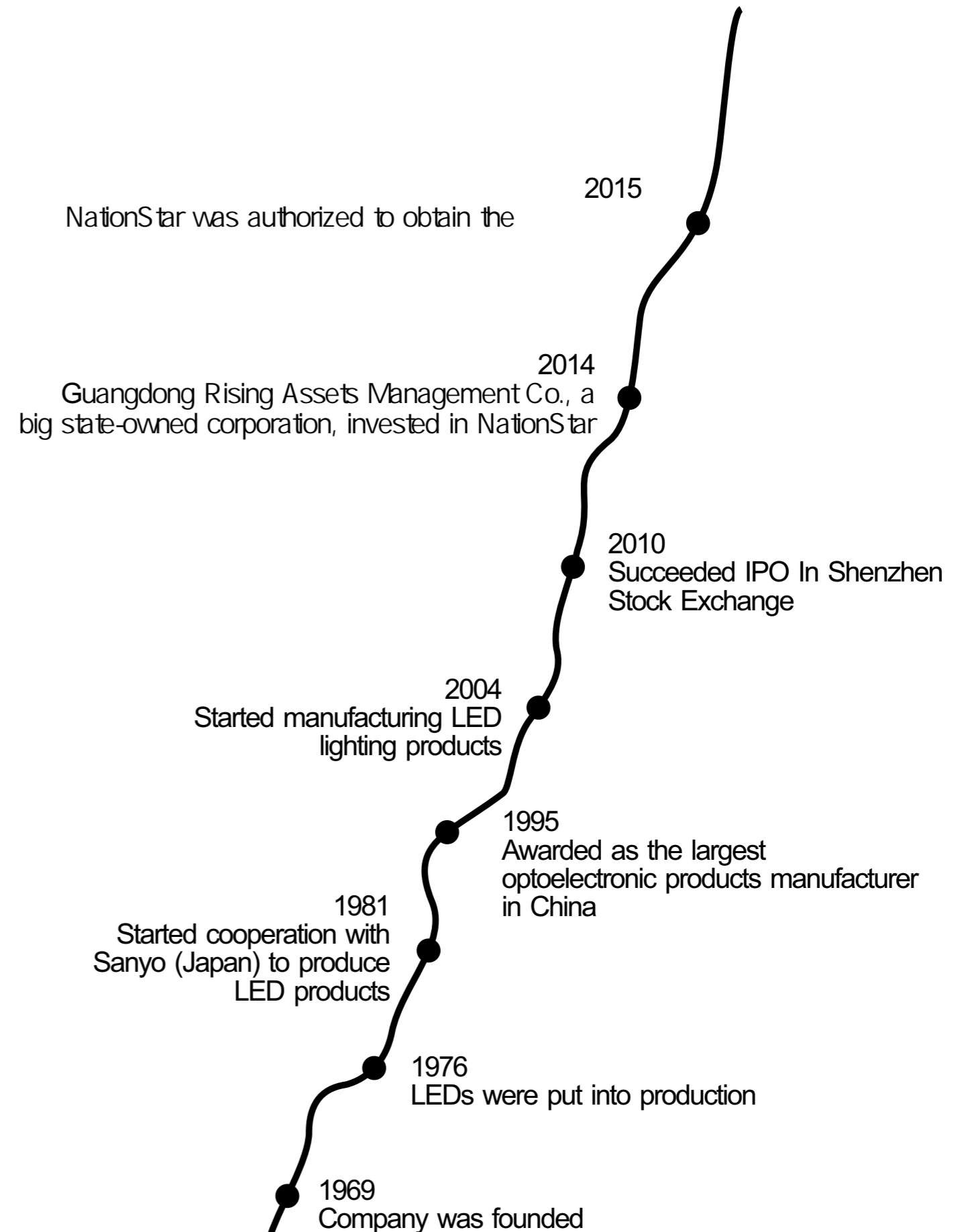


LED



Lighting product

HISTORY



PRODUCTION FACILITIES



NationStar Semiconductor



LED Encapsulation



SMT Production Line



Production Line for LED Panel



Production Line for LED Tape Light



Testing Lab

MANAGEMENT SYSTEMS



OHSAS18001 occupation health and safety management system



ISO9001 quality management system

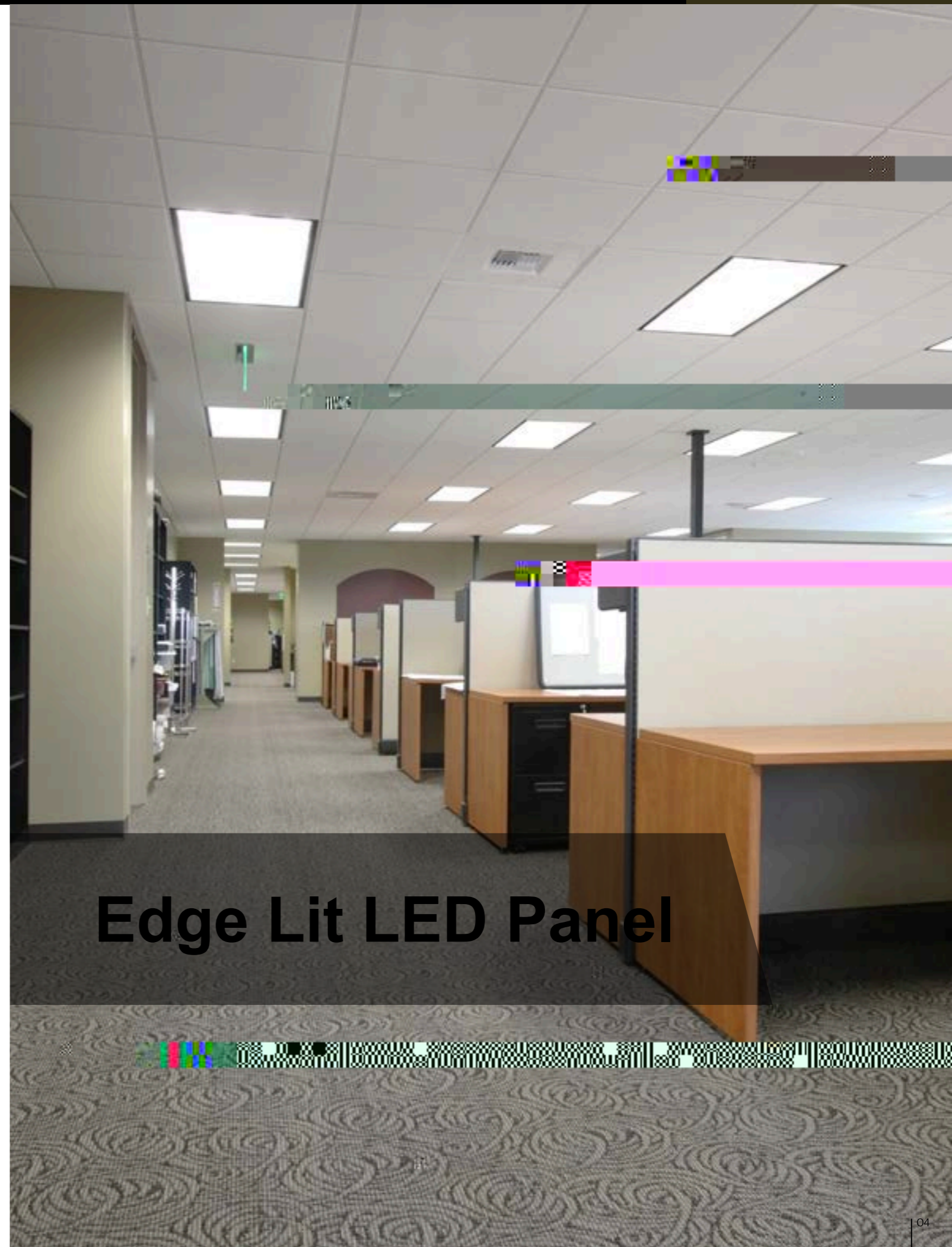


ISO14001 environmental management system



ISO-TS16949 quality management system

ISO/IEC 17025:2005 General Requirements



Edge Lit LED Panel

Mini-Module LED Panel



RoHS
COMPLIANT

CCT Tunable Edge Lit LED Panel



FEATURES

and 125lm/W.

- Ideal energy-efficient replacement for fluorescent fixtures in offices, schools, hospitality, health care and other commercial and industrial applications.

PERFORMANCE

Model	Dimensions (mm)	Mounting	Beam Spread	Beam Angle	Beam Diameter (mm)	Beam Area (m²)	Beam Length (m)	Beam Width (m)	Beam Height (m)	Beam Diameter (mm)	Beam Area (m²)	Beam Length (m)	Beam Width (m)	Beam Height (m)	Beam Diameter (mm)	Beam Area (m²)	Beam Length (m)	Beam Width (m)	Beam Height (m)
NS-PLS-6060	23.75x23.75x0.39 (2x2)	AC100-277	20-50	2000-5000	100	>80	3000/3500/4000/5000	>0.9	V4.1 Standard										
			20-40	2500-5000	125	V4.1 Premium													
NS-PLS-60120	23.75x47.75x0.39 (2x4)	AC100-277	30-50	3000-5000	100	>80	3000/3500/4000/5000	>0.9	V4.1 Standard										
			24-48	3000-6000	125	V4.1 Premium													

SUSPENDING KIT:

Surface mounted frame

Pendant mounted wire rope

Emergency backup





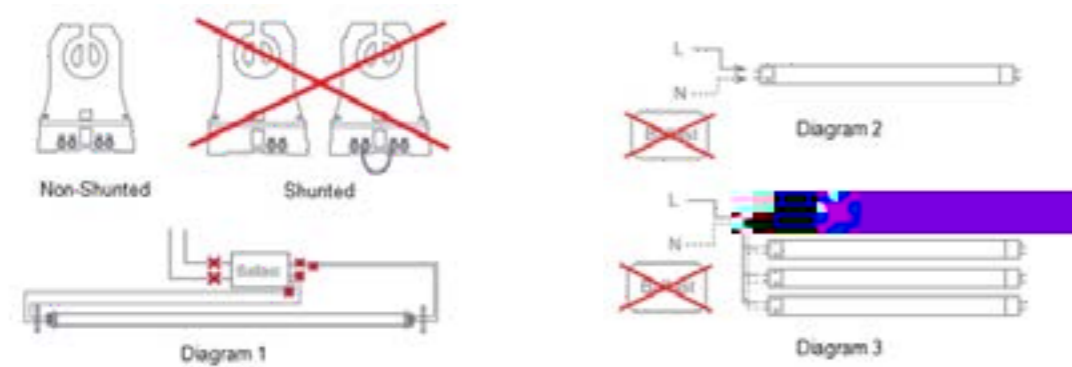
UL/DLC By Pass LED T8 (Type B)



FEATURES

- Built-in universal voltage driver, by pass installation.
- Exceptional lighting efficiency up to 130lm/W, perfect replacement of the traditional fluorescent tube.

INSTALLATION INSTRUCTION



- Wide beam design 270 degree wide viewing.
- End-to-end lighting with no dark spots.

PERFORMANCE

INSTALLATION INSTRUCTION

Model	Length (ft)	Power (W)	Beam Angle (°)	Length (mm)	Width (mm)	Height (mm)	Efficiency (lm/W)	Life (hrs)	Beam Spread (%)	Version
NS-T8-2H9-XW	2	AC100-277	9	990	110	>80	3000/3500/4000/5000	>0.9	V4.1	
NS-T8-3H15-XW	3	AC100-277	15	1500	100	>80	3000/3500/4000/5000	>0.9	/	
NS-T8-4H15-XW	4	AC100-277	15	1800	120	>80	3000/3500/4000/5000	>0.9	V4.1	
NS-T8-4H18-XW-H	4	AC100-277	18	2200	120	>80	3000/3500/4000/5000	>0.9	V4.1	
NS-T8-5H20-XW	5	AC100-277	20	2600	130	>80	3000/3500/4000/5000	>0.9	/	



UL/DLC Direct Fit LED T8 (Type A)



FEATURES

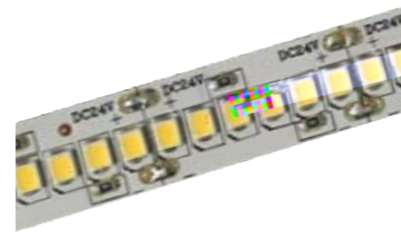
- Compatible with more than 200 kinds of normal electronic instant start ballasts, no rewiring.
- Exceptional lighting efficiency up to 150lm/W, perfect replacement of the traditional fluorescent tube.

- Wide beam design 270 degree wide viewing.
- End-to-end lighting with no dark spots .

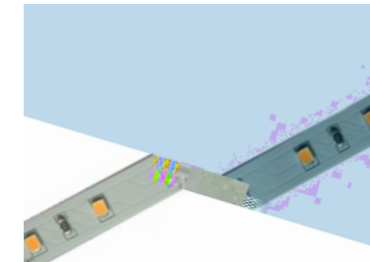


LED Strip

LED STRIP NEW DESIGN STRIP



Efficiency is as high as 160lm/W
 PCB width 0.39inch, DC 24V
 64LED/meter, 1.8W/ft, 290lm/ft,
 16.4ft/roll, 32ft max. running length
 128LED/meter, 3.5W/ft, 560lm/ft,
 16.4ft/roll, 32ft max. running length



CRI is as high as 95
 PCB width 0.31/0.39inch, DC 24V
 18LED/ft, 1.5W/ft, 125lm/ft,
 16.4ft/roll, 16.4ft max. running length
 36LED/ft, 3.7W/ft, 305lm/ft,
 16.4ft/roll, 16.4ft max. running length



With 4 in 1 RGBW LED, multi colors
 (red, green, blue, white)
 PCB width 0.47inch, DC 24V
 18LED/ft, 5.7W/ft, R 30lm/ft,
 G 52lm/ft, B 14lm/ft, W 110lm/ft
 16.4ft/roll, 16.4ft max. running length



Strips can be used with controller to
 change the color temperature
 CCT from 2700 to 6000K
 PCB width 0.39inch, DC 24V
 72LED/ft, 1.8W/ft, CW 183lm/ft,
 WW 152lm/ft, 16.4ft/roll, 16.4ft max.
 running length
 72LED/ft, 3.7W/ft, CW 335lm/ft,
 WW 293lm/ft, 10ft/roll, 10ft max.
 running length



Strips can be bended more than 90°
 PCB width 0.24inch, DC 24V
 18LED/ft, 1.2W/ft, 128lm/ft
 16.4ft/roll, 16.4ft max. running length


LED STRIP

NON-WATERPROOF LED STRIP

FEATURES

- High brightness SMD
- Strips can be cut every 5cm/10cm and reconnect
- Variety of optional colors and accessories
- Standard PCB color: White
- CRI 80/90
- 3M adhesive backing
- Suitable for dry locations



<ul style="list-style-type: none"> · 10ft max. running length · 159LM/ft · PCB width 0.19inch · DC 24V input 	<ul style="list-style-type: none"> · 16.4ft max. running length · 159LM/ft · PCB width 0.39inch · DC 24V input 	<ul style="list-style-type: none"> · 16.4ft max. running length · 305LM/ft · PCB width 0.39inch · DC 24V input 	<ul style="list-style-type: none"> · 16.4ft max. running length · 335LM/ft · PCB width 0.39inch · DC 24V input 	<ul style="list-style-type: none"> · 10ft max. running length · 640LM/ft · PCB width 0.39inch · DC 24V input 	<ul style="list-style-type: none"> · 10ft max. running length · 610LM/ft · PCB width 0.47inch · DC 24V input 	<ul style="list-style-type: none"> · 16.4ft max. running length · R: 38LM/ft G:92LM/ft B: 19LM/ft W:127LM/ft · PCB Width: 0.39inch · DC 24V input
 <p>COOL WHITE NS-FA3528CW18-24-4.8</p>	<p>COOL WHITE NS-FA3528CW18-24</p>	<p>COOL WHITE NS-FA3528CW18-24-B</p>	<p>COOL WHITE NS-FA3528CW36-24</p>	<p>COOL WHITE NS-FA3528CW36-24-UB</p>	<p>COOL WHITE NS-FA3528CW72-24</p>	<p>NS-FA5050RGB18-24</p>
 <p>NEUTRAL WHITE NS-FA3528NW18-24-4.8</p>	<p>NEUTRAL WHITE NS-FA3528NW18-24</p>	<p>NEUTRAL WHITE NS-FA3528NW18-24-B</p>	<p>NEUTRAL WHITE NS-FA3528NW36-24</p>	<p>NEUTRAL WHITE NS-FA3528NW36-24-UB</p>	<p>NEUTRAL WHITE NS-FA3528NW72-24</p>	<ul style="list-style-type: none"> · 16.4ft max. running length · R: 34LM/ft Y: 30LM/ft G:67LM/ft B: 18LM/ft · PCB Width: 0.39inch · DC 24V input
 <p>WARM WHITE NS-FA3528WW18-24-4.8</p>	<p>WARM WHITE NS-FA3528WW18-24</p>	<p>WARM WHITE NS-FA3528WW18-24-B</p>	<p>WARM WHITE NS-FA3528WW36-24</p>	<p>WARM WHITE NS-FA3528WW36-24-UB</p>	<p>WARM WHITE NS-FA3528WW72-24</p>	<ul style="list-style-type: none"> NS-FA3528R18-24 NS-FA3528Y18-24 NS-FA3528G18-24 NS-FA3528B18-24

Easy Installation in Anywhere



Easy Installation in Anywhere



Accessories for Non-waterproof Single Color LED Strip

- 0-100% Dimming
- Can only be used in DC12/24V
- For indoor use only

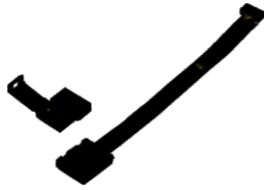


- Connects strips to power supply

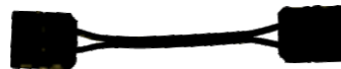


Single Color Connectors

- Connects 2 sections of the strips together



- Connects 2 sections of the strips together



- Connects 3 sections of the strips together
- One input, two outputs
- Ideal for making "T" & "Y" connections



- Connects 4 sections of the strips together
- One input, three outputs



Accessories for Non-waterproof RGB LED Strip

- Must be used with RGB LED strips
- With remote controller
- Adjusts speed and brightness
- Connects between power supply and strips



- Connects strips to power supply

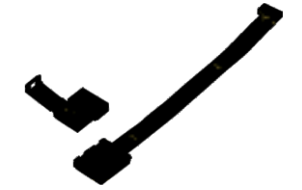


Indoor Power Supply
From 30W to 320W
available



RGB Connectors

- Connects 2 sections of the strips together



- Connects 2 sections of the strips together



- Connects 3 sections of the strips together
- One input, two outputs
- Ideal for making "T" & "Y" connections

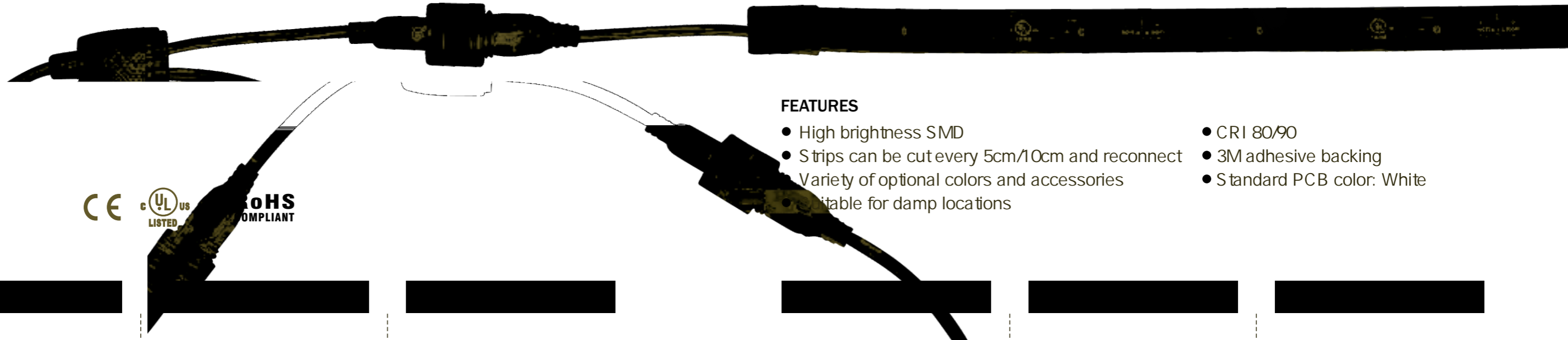


- Connects 4 sections of the strips together
- One input, three outputs



LED STRIP

IP54 WATERPROOF LED STRIP



FEATURES

- High brightness SMD
- Strips can be cut every 5cm/10cm and reconnect
- Variety of optional colors and accessories
- Suitable for damp locations
- CRI 80/90
- 3M adhesive backing
- Standard PCB color: White

· 10ft max. running length
· 151LM/ft
· PCB width 0.19inch
· DC 24V input

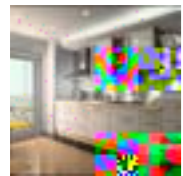
· 16.4ft max. running length
· 151LM/ft
· PCB width 0.39inch
· DC 24V input

· 16.4ft max. running length
· 290LM/ft
· PCB width 0.39inch
· DC 24V input

· 16.4ft max. running length
· 318LM/ft
· PCB width 0.39inch
· DC 24V input

· 10ft max. running length
· 608LM/ft
· PCB width 0.39inch
· DC 24V input

· 10ft max. running length
· 580LM/ft
· PCB width 0.47inch
· DC 24V input



COOL WHITE
NS-FD3528CW18-24-4.8

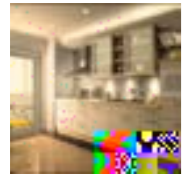
COOL WHITE
NS-FD3528CW18-24

COOL WHITE
NS-FD3528CW18-24-B

COOL WHITE
NS-FD3528CW36-24

COOL WHITE
NS-FD3528CW36-24-UB

COOL WHITE



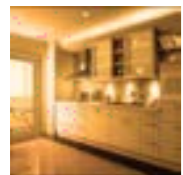
NEUTRAL WHITE
NS-FD3528NW18-24-4.8

NEUTRAL WHITE
NS-FD3528NW18-24

NEUTRAL WHITE
NS-FD3528NW18-24-B

NEUTRAL WHITE
NS-FD3528NW36-24

NEUTRAL WHITE
NS-FD3528NW36-24-UB



WARM WHITE
NS-FD3528WW18-24-4.8

WARM WHITE
NS-FD3528WW18-24

WARM WHITE
NS-FD3528WW18-24-B

WARM WHITE
NS-FD3528WW36-24

WARM WHITE
NS-FD3528WW36-24-UB

Easy Installation in Anywhere

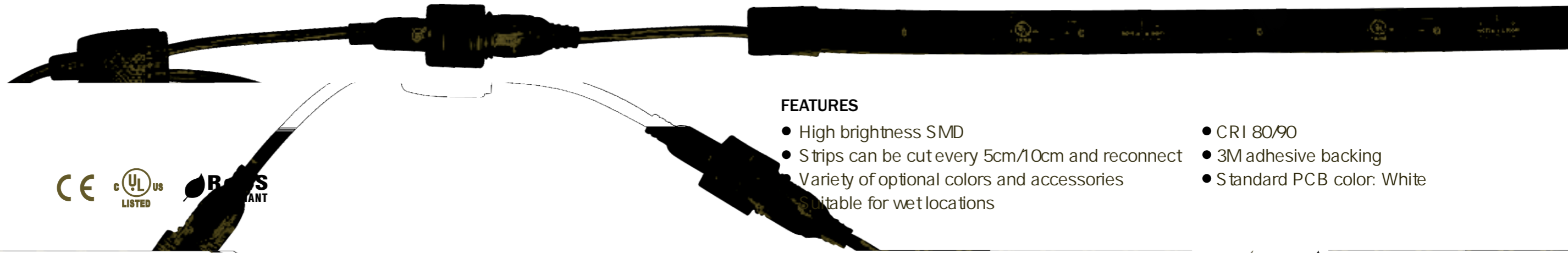


Easy Installation in Anywhere



LED STRIP

IP67 WATERPROOF LED STRIP



FEATURES

- High brightness SMD
- Strips can be cut every 5cm/10cm and reconnect
- Variety of optional colors and accessories
- Suitable for wet locations
- CRI 80/90
- 3M adhesive backing
- Standard PCB color: White

<ul style="list-style-type: none"> · 10ft max. running length · 151LM/ft · PCB width 0.19inch · DC 24V input 	<ul style="list-style-type: none"> · 16.4ft max. running length · 151LM/ft · PCB width 0.31inch · DC 24V input 	<ul style="list-style-type: none"> · 16.4ft max. running length · 290LM/ft · PCB width 0.39inch · DC 24V input 	<ul style="list-style-type: none"> · 16.4ft max. running length · 318LM/ft · PCB width 0.31inch · DC 24V input 	<ul style="list-style-type: none"> · 10ft max. running length · 608LM/ft · PCB width 0.39inch · DC 24V input 	<ul style="list-style-type: none"> · 10ft max. running length · 580LM/ft · PCB width 0.47inch · DC 24V input
 <p>COOL WHITE NS-FC3528CW18-24-4.8</p>	<p>COOL WHITE NS-FC3528CW1</p>	<p>COOL WHITE NS-FC3528CW18-24-B</p>	<p>COOL WHITE NS-FC3528CW36-24</p>	<p>COOL WHITE NS-FC3528CW36-24-UB</p>	<p>COOL WHITE NS-FC3528CW72-24</p>
 <p>NEUTRAL WHITE NS-FC3528NW18-24-4.8</p>	<p>NEUTRAL WHITE NS-FC3528NW1</p>	<p>NEUTRAL WHITE NS-FC3528NW18-24-B</p>	<p>NEUTRAL WHITE NS-FC3528NW36-24</p>	<p>NEUTRAL WHITE NS-FC3528NW36-24-UB</p>	<p>NEUTRAL WHITE NS-FC3528NW72-24</p>
 <p>WARM WHITE NS-FC3528WW18-24-4.8</p>	<p>WARM WHITE NS-FC3528WW1</p>	<p>WARM WHITE NS-FC3528WW18-24-B</p>	<p>WARM WHITE NS-FC3528WW36-24</p>	<p>WARM WHITE NS-FC3528WW36-24-UB</p>	<p>WARM WHITE NS-FC3528WW72-24</p>

Easy Installation in Anywhere



Easy Installation in Anywhere



Accessories for Waterproof Single Color LED Strip

- Connects strips to power supply



Single Color Connectors

- Connects 2 sections of the strips together



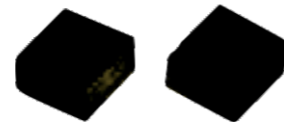
- Connects 3 sections of the strips together
- One input, two outputs
- Ideal for making "T" & "Y" connections



- Connects 4 sections of the strips together
- One input, three outputs



- Terminal for the strips



- Silicone glue for the end cap



- Fix the strips on the surface



Accessories for Waterproof RGB LED Strip

- Connects strips to power supply



RGB Connectors

- Connects 2 sections of the strips together



- Connects 3 sections of the strips together
- One input, two outputs
- Ideal for making "T" & "Y" connections



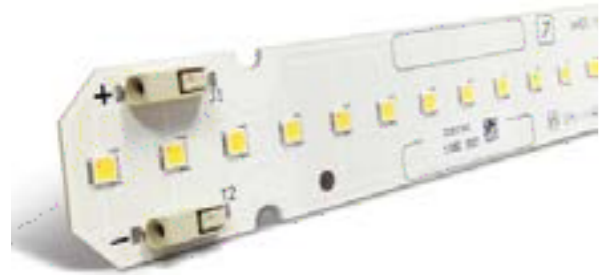
- Connects 4 sections of the strips together
- One input, three outputs



- Outdoor Power Supply



LED MODULE



FEATURES

- PCB kinds: FR4,CEM,AL
- LED type:2835,4014,5050,3030,RGB,3535 high power
- Input 12v/24v/350mA 700mA,1000mA and etc
- Lumen output 90LMW to 200LMW
- Connector: as customer request
- Typical Applications: Office lighting, Retail, corridor and shelf lighting
- We offer OEM & ODM service

